



TRULY PORTABLE, POWDER FREE, COLOR 2D AND 3D INTRAORAL SCANNING WITH THE CARESTREAM DENTAL CS3500



CS3500



MAKE THE PERFECT IMPRESSION

We are an AmericaSmiles/Carestream Certified Dental Laboratory and are able to work with the digital impressions sent by dentists using the CS3500 Intraoral Digital Impression Scanner



SIMPLER OPERATIONS, EFFICIENT PROCEDURES, EASIER WORKFLOWS

Over the years, technology has literally changed what is possible within dentistry, but all too often it is too complex. It takes you out of your comfort zone. It requires too much training and it is not patient-friendly. Carestream Dental is challenging that reality.

We believe highly complex and sophisticated technologies should translate into simple solutions that complement your work, not complicate it. We have explored every detail in order to remove unnecessary inconveniences from necessary procedures.

Purchasing the CS3500 through the AmericaSmiles Network means you are buying a product your existing lab partner can support.

COMFORT COMES NATURALLY

Removing conventional impressions from your workflow is a comfort in itself. Taking digital scans removes the need for you to mix impression materials which your patients find uncomfortable as well as removing the need for the lab to cast and trim plaster models. These stages can lead to inaccuracies which are eliminated by “going digital”. The Carestream Dental scanner does not require scanning powder, and is compact with a slim scanner head. It includes two sizes of scanning tips, which can be autoclaved several times and are disposable for proper hygiene and infection control.

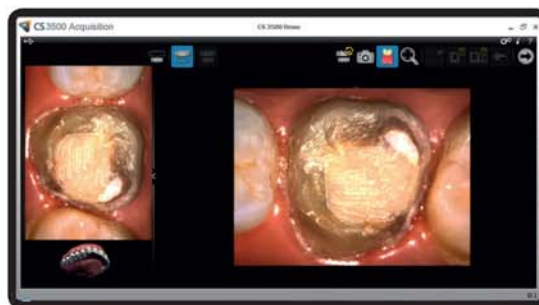
How do we know the digital process is preferred by dentists, nurses, technicians, and patients? We've asked them. Please contact AmericaSmiles for more information.

THE BENEFITS OF CARESTREAM DENTAL DIGITAL IMPRESSIONS

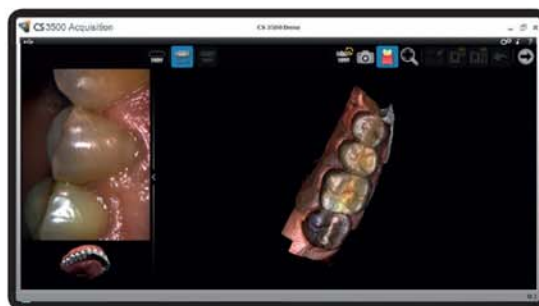
The exceptional image quality ensures accuracy and improves communication, by easily helping you identify margin lines, contact points, and undercuts, before sending to the laboratory.

The Carestream Dental CS3500 also offers:

- True Color 2D photos and 3D impressions that clearly distinguish tooth structures from soft tissue and restorations
- Impressive average precision of 30 μ m
- Virtually automatic bite registration
- Margin marking software tool
- Repeatable quality - no drags, pulls, or voids
- Patient comfort
- Digital storage of your digital impressions
- Fast communication - the files can be transmitted for review while the patient is still in the chair



2D image capture.



True to life color results from a 3D scan.

OPEN STL



WHAT IS AN OPEN SYSTEM?



The CS3500 scanner produces an .STL file which can be easily shared with your AmericaSmiles Network laboratory via our secure web-based network. For difficult cases, we can design your restorations while your patient is still in the chair. If there is any feedback requiring any prep adjustments, the patient will not have to be recalled for a new appointment.

An open system creates files that can be utilized by many different CAD systems (such as 3Shape, Exocad, or Dental Wings software). Your existing lab can import CS3500 data files into these systems for designing the restoration. Once the design is complete the case can be manufactured in the material you have requested.

Technical Specifications

CS3500 Components

Sensor Technology	Effective Pixels; 1.3 megapixels
Resolution	Still: 1024x768 Video: 640x480
Accuracy	30um (average precision)
Illumination	4c LED: Amber, Blue, Green, UV
Field of View	16x12 mm normal tip 12x9 mm smaller tip
Depth of Field	-2 to +13 mm
Cable Length	2.5 m
Digital Connect	USB 2.0 High Speed
Dimensions	245x37x62 mm
Weight	295g / 8.64 oz



WE ARE AN AMERICASMILES CERTIFIED LAB

Our lab follows a strict process which ensures that your digital files can be incorporated seamlessly into our workflow.

For more information on the CS3500, call (708) 367-1207 or go to www.AmericaSmiles.com/intraoral-scanner.

